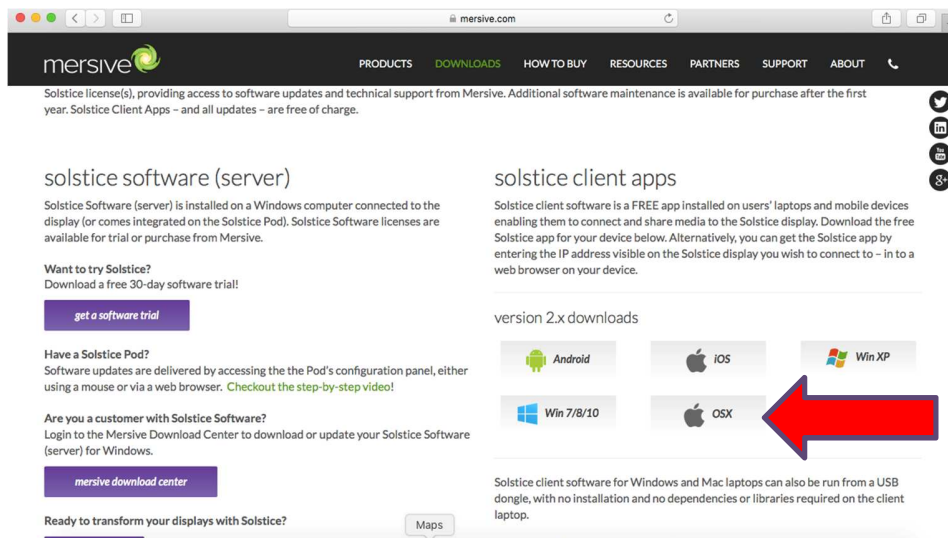
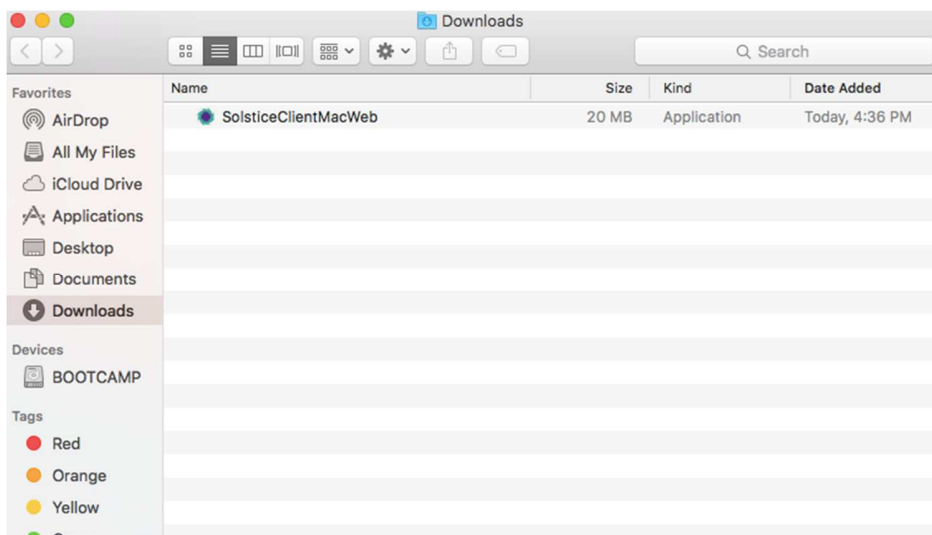


Solstice Client for Mac OSX

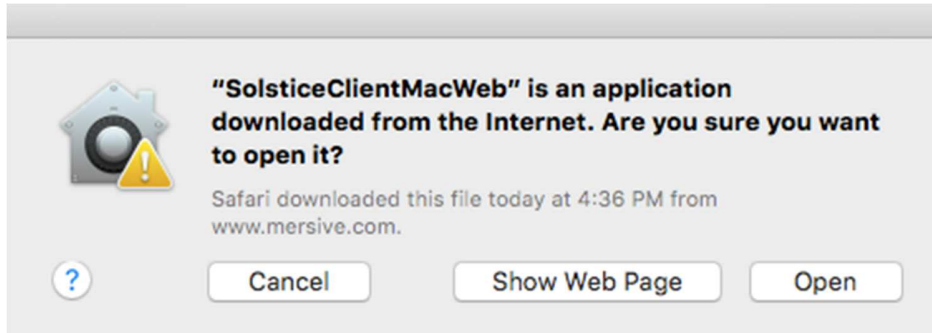
- Download the latest Solstice Client for Mac OSX from <https://www.mersive.com/download/> (Hint: do not use the default installation for Mac OSX when inputting the IP address into your browser. That installation file has issues connecting your device to the projector)



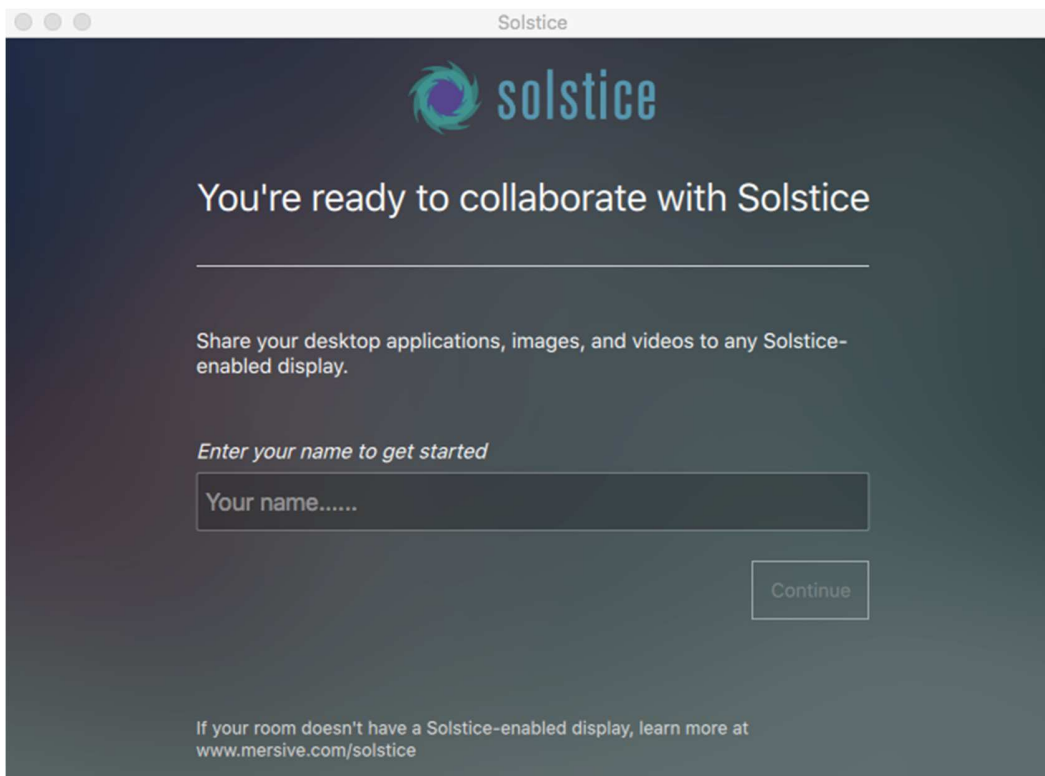
- After downloading the Solstice client, open and run the application



- You may receive the following message. Select the option to “Open”



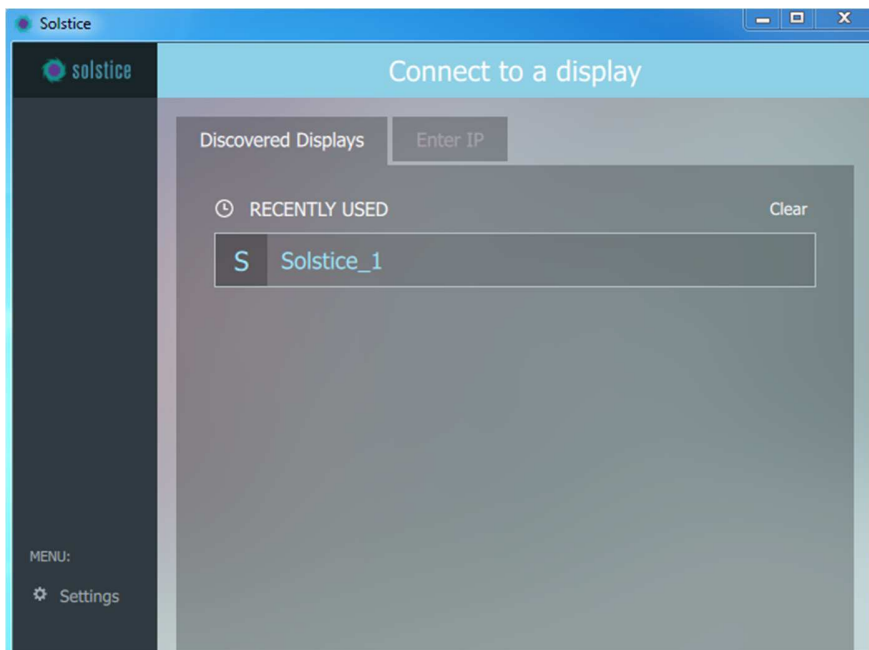
- Input a name you would like to name your device



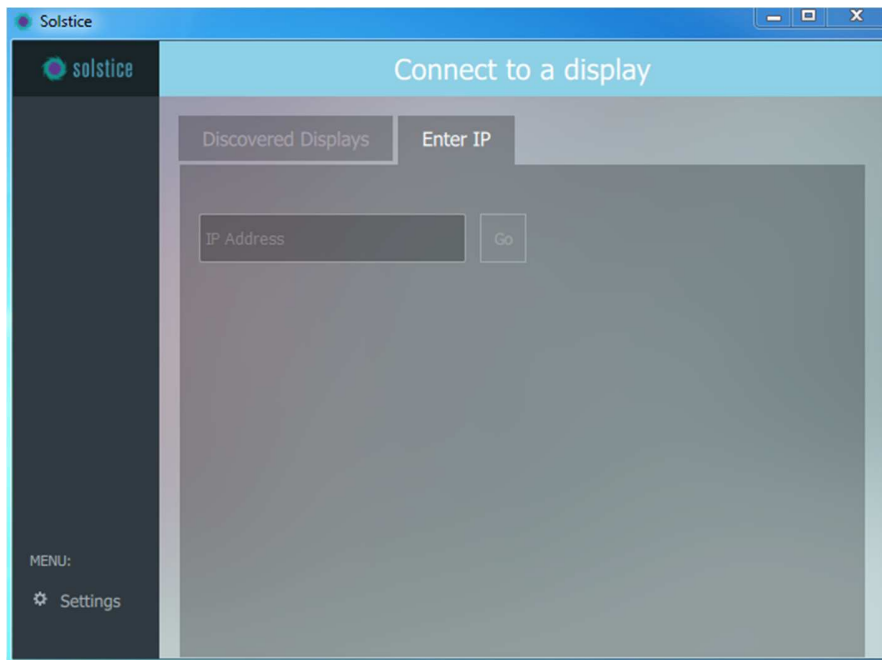
- Open the Solstice Client



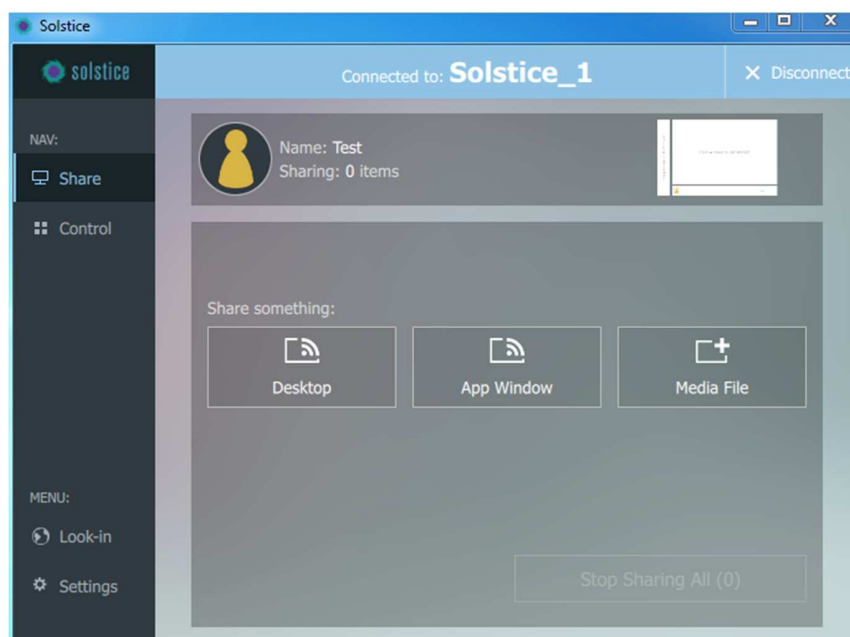
- There are two options on how to connect your computer to the projector wirelessly:
 - 1) Option 1: Auto discover – Selecting the option below will connect your computer to the projector



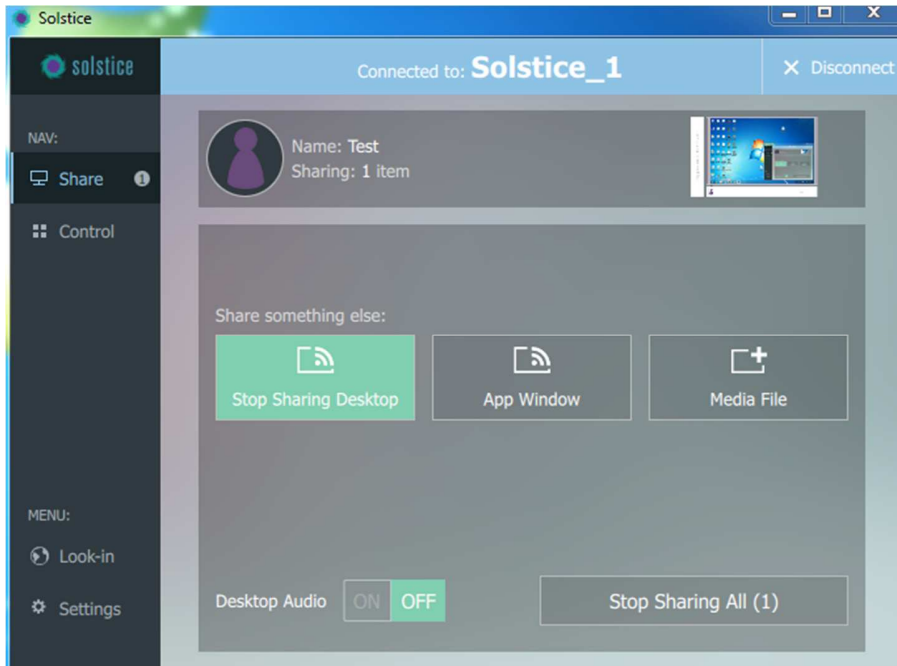
- 2) Option 2: Enter the IP address that is being displayed on the projector screen



- Once the Solstice Client has synced with the projector, you will have the following options. Selecting desktop will display your whole desktop, App Windows will display your application and Media File will display your media file



- After selecting your display option, there will be another option that allows you to control your audio



- You are now ready to use the projector

