

## Using the WePresent

### A Quick Start Guide (For Macs)

Hello First Time User!

Here are some simple steps to get started!

Download the necessary files for your version of the computer from this website:

<http://www.wepresentwifi.com/downloads.html>

Options range from the Windows version to Mac, to even your smartphone!

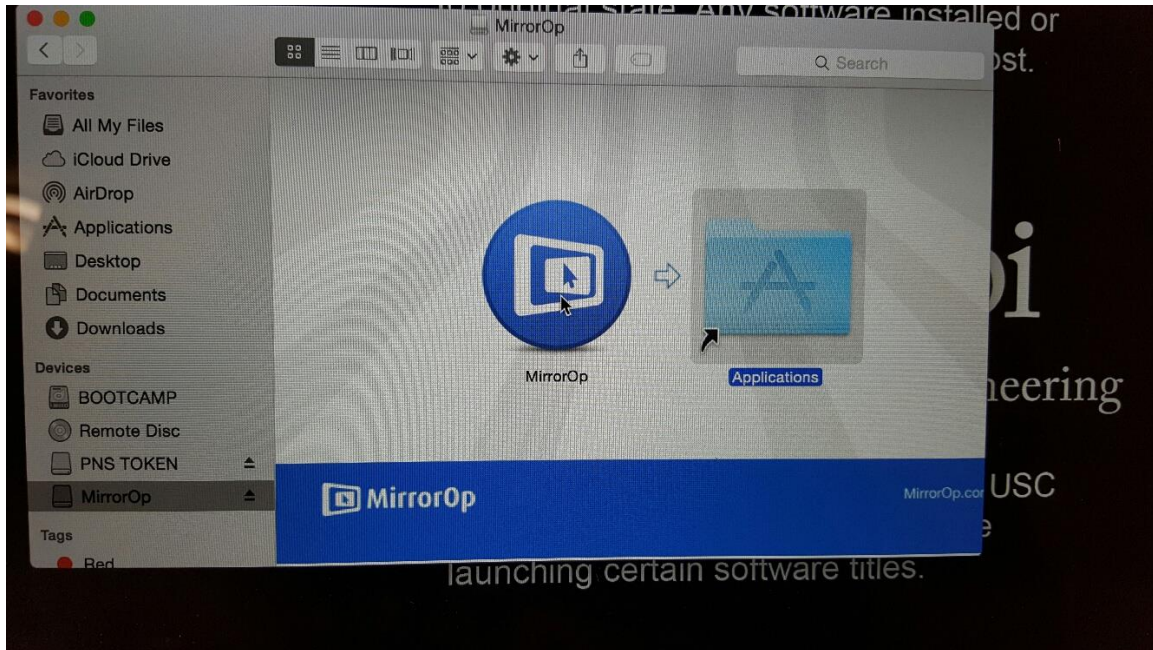
We will focus on the Mac for this guide.

Download and launch MirrorOP.dmg



**MirrorOp.dmg**

Move the MirrorOp Icon and drag it to the applications folder where it will install all necessary files.



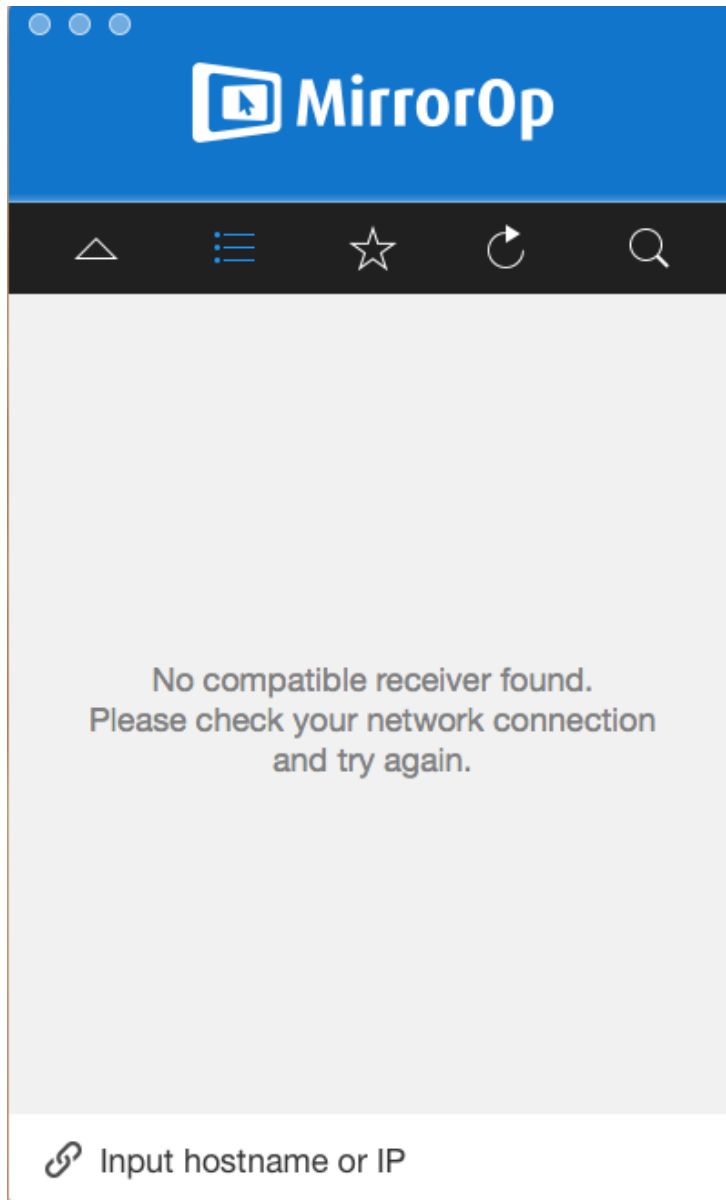
Then go to Applications → MirrorOp and make a shortcut on your dock for easy access.

With everything set, launch the app from your dock and you'll come upon a screen like this:



There will be a small introduction to the program; its features are accompanied by several illustrations.

Afterwards, you will find your computer trying to locate the WiPG device but will most likely show this result:



This is normal. You will notice the following at the bottom.

 Input hostname or IP

Here you will click anywhere in the text and put in the IP address in the format shown:

**AB.CDE.FGH.IJK**

The letters are in place of the unique IP address for each device. This is displayed along with the unique four-digit code needed for the device to connect successfully. Take notice of the periods between each letter set, they are important.

***If you aren't sure or you cannot connect, please see the Engineering Computing Center front desk for assistance.***

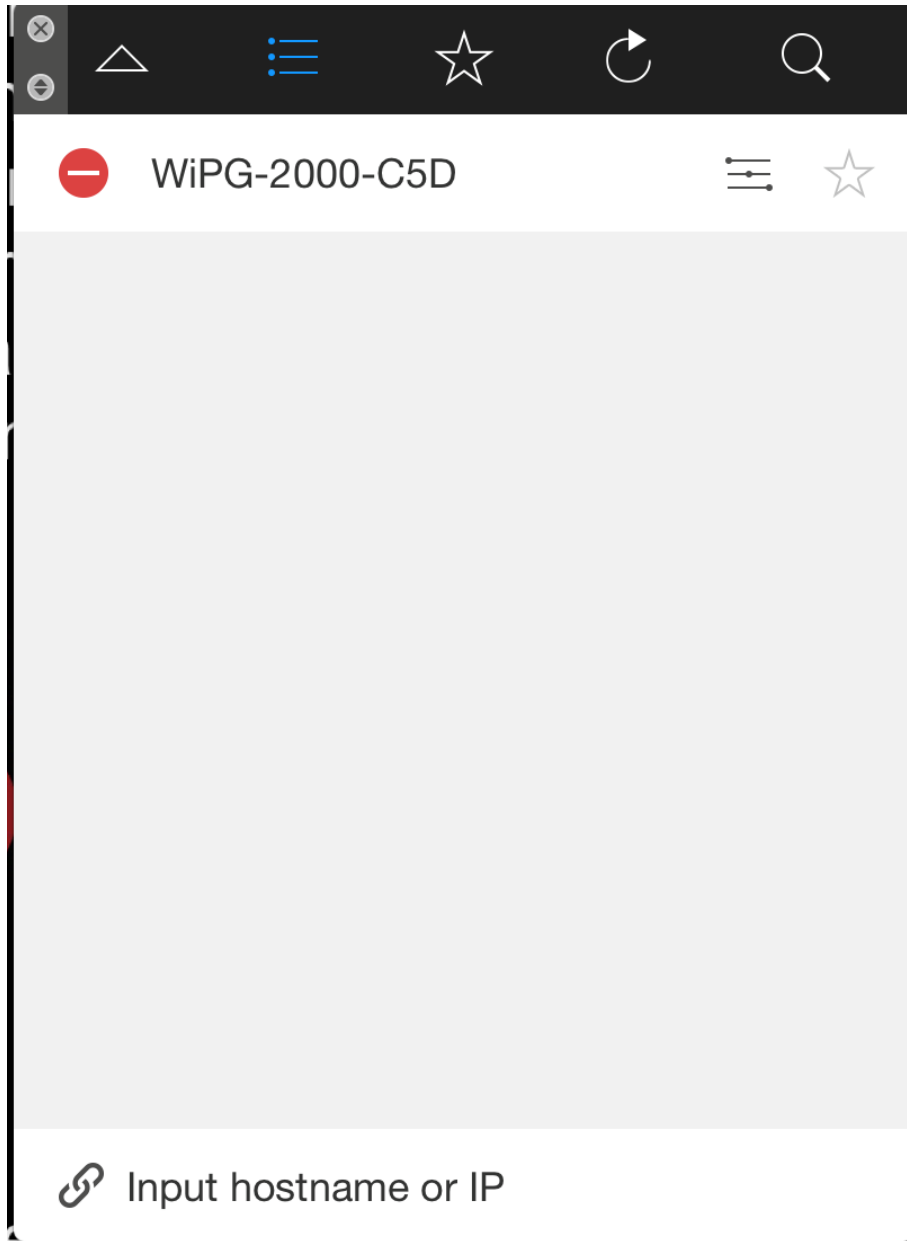
The Code format will be like this:

**####**

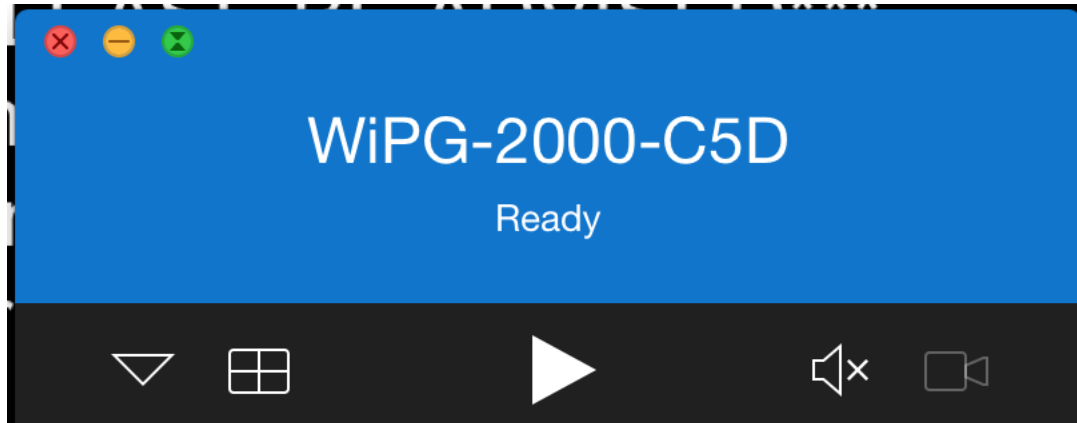
The Code is unique every time, but will be in a four digit format every time.

***If you aren't sure or you cannot connect, please see the Engineering Computing Center front desk for assistance.***

After you successfully connect, you'll come upon this screen:



Press the Upward facing triangle to see this Screen:



Press the white Play button and get ready to connect wirelessly to the big screen without the use of a cable!

If you have any questions about use of this device, please see the Engineering Computing Center front desk for assistance.

Thanks for using WePresent!