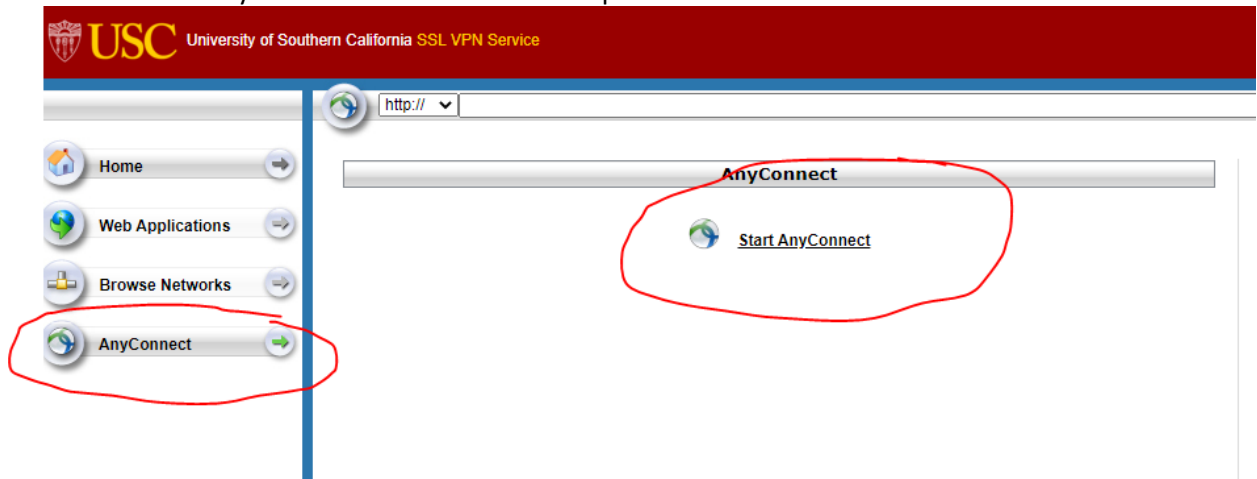


## Student Guide for ITP Security Lab

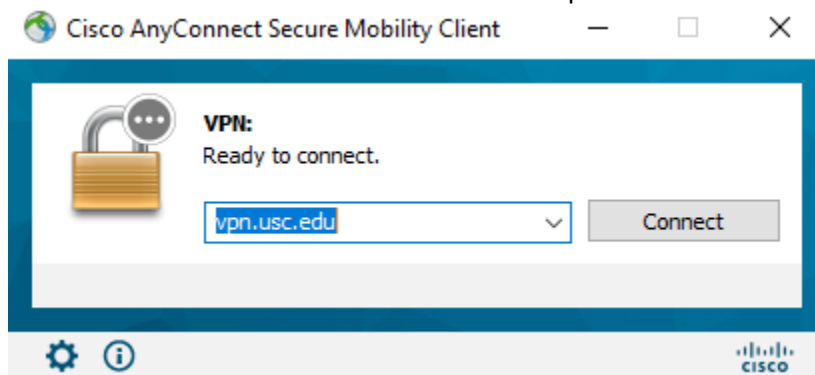
1. Install Cisco AnyConnect.

**You must connect to USC VPN first before being able to remote into the ITP Security Lab.**

- A. Go to [vpn.usc.edu](http://vpn.usc.edu)
- B. Download Cisco AnyConnect. The software is compatible with both Windows and Mac.



The recommended VPN server for students is [vpn.usc.edu](http://vpn.usc.edu)



For more information on USC's VPN services, please visit: <https://itservices.usc.edu/vpn/>

2. Remoting into the ITP Security Lab

After connecting to the USC VPN.

- A. Go to [MyViterbi.usc.edu](http://MyViterbi.usc.edu)
- B. Click on the **Remote Access ITP Security Lab** tool.
- C. Please select your enrolled course:

Course Number	Course Section	Course Title	Instructor	Schedule	Assigned Folder
ITP 125L	31833 / 31834	From Hackers to CEOs: Introduction to Information Security	Greenfield, Joseph	Wed 2:00 pm - 4:50 pm	ITP125-S3
ITP 125L	31836 / 31837	From Hackers to CEOs: Introduction to Information Security	Furay, John	Mon 6:00 pm - 8:50 pm	ITP125-S4
ITP 125L	31838 / 31839	From Hackers to CEOs: Introduction to Information Security	Derderian, Grant	Tue 6:00 pm - 8:50 pm	ITP125-S1
ITP 125L	31840 / 31841	From Hackers to CEOs: Introduction to Information Security	Greenfield, Joseph	Wed 9:00 am - 11:50 am	ITP125-S2
ITP 325	31820	Ethical Hacking and Systems Defense	Sedek, Caesar, Julius	Wed 6:00 pm - 8:50 pm	ITP325-S1
ITP 325	31850	Ethical Hacking and Systems Defense	Mcgregor, Stefan	Tue 11:00 am - 1:50 pm	ITP325-S2

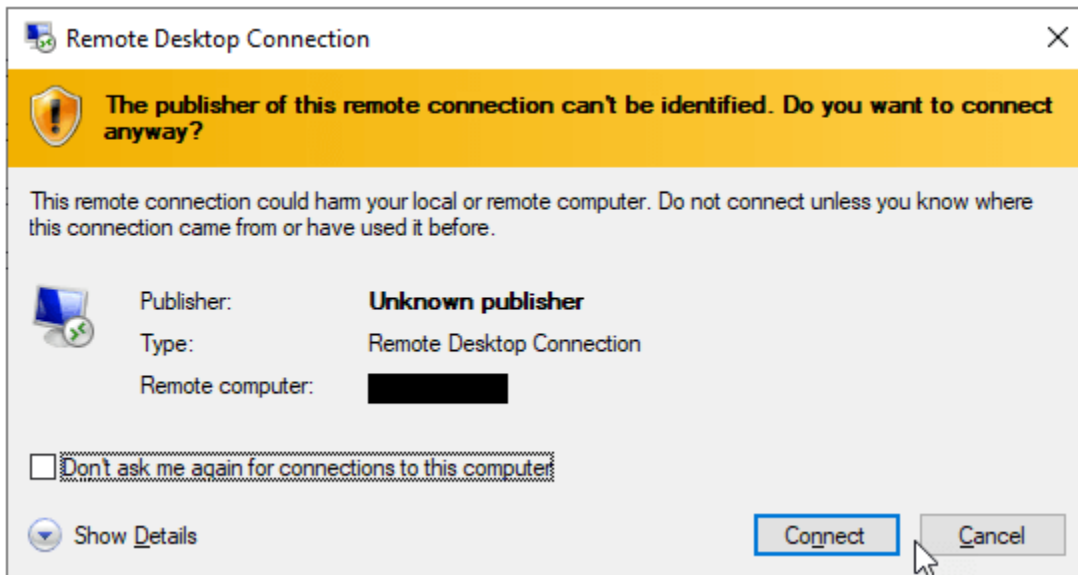
You will only have access to your enrolled course. Do note the class time schedule. While classes are in session, if you are not enrolled in that class, you will not be able to log on.

- D. Select your course and then click the **Connect to a Computer** button
- E. Click the **Download** button.
- F. Save the RDP file on your desktop or your desired folder.

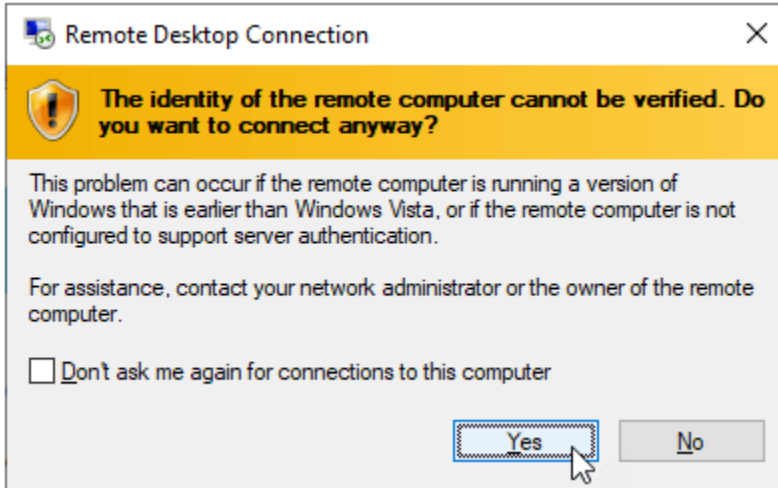
### For Windows users:

Launch the downloaded .RDP file

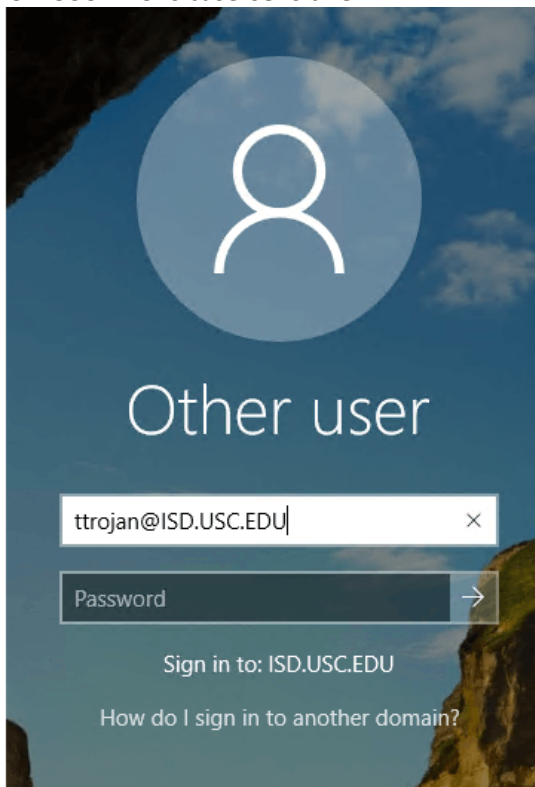
1. You will be prompted with a security warning. Click on the **Connect** button to continue.



2. On second warning (The identity of the remote computer cannot be verified. Do you want connect anyway), click the **Yes** button to continue.



3. At the login prompt, type your USCNetID user name followed by the domain suffix @ISD.USC.EDU into the user name field. For example, ttrojan@ISD.USC.EDU, and then type your USCNetID account password in the next field. Please note that the domain suffix ISD.USC.EDU is case-sensitive.

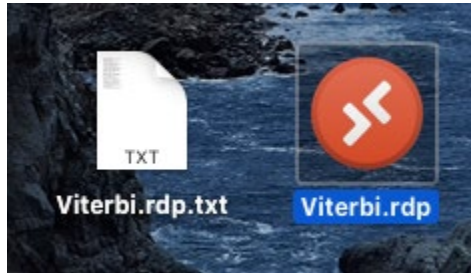


**The password is the same that you used to log into myViterbi.usc.edu with.**

## For Mac Users:

1. You must download the Microsoft Remote Desktop app from the Apple App store.  
<https://apps.apple.com/us/app/microsoft-remote-desktop/id1295203466?mt=12>

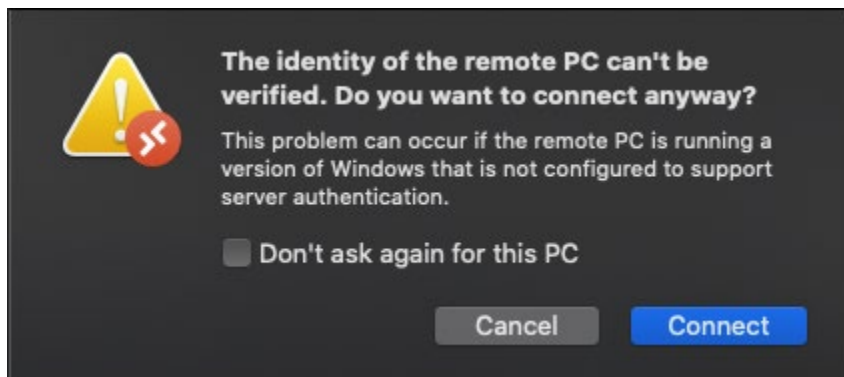
**Do Note, please make sure the downloaded .RDP file is formatted accordingly.**



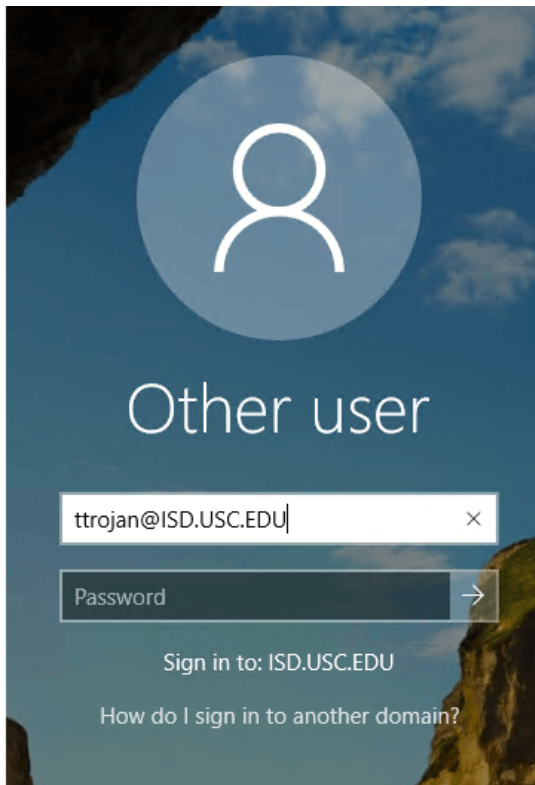
If there is a “.txt” at the end of the extension, please do the following:

- A. Right Click on the file.
  - B. Select **Get Info**
  - C. On the **Name & Extension** bar, remove the “.txt” and make sure “.RDP” is the correct extension.
2. Launch the downloaded .RDP file.

The Microsoft Remote Desktop app will launch and you will be prompted with a security warning. Click on the **Connect** button.



3. At the login prompt, type your USCNetID user name followed by the domain suffix @ISD.USC.EDU into the user name field. For example, ttrojan@ISD.USC.EDU, and then type your USCNetID account password in the next field. Please note that the domain suffix ISD.USC.EDU is case-sensitive.

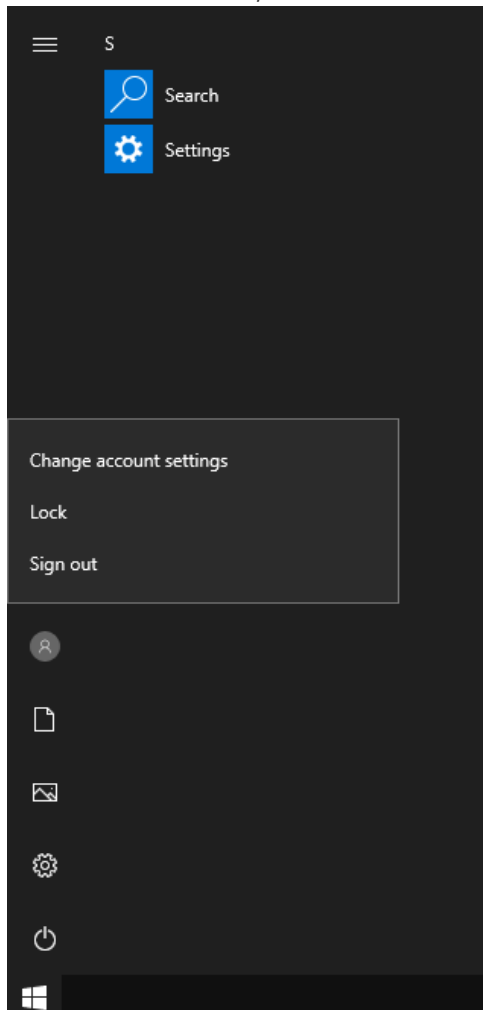


**The password is the same that you used to log into myViterbi.usc.edu with.**

## Sign out of the Remote Desktop

After completing your assignment or class, please make sure you sign out properly.

- Select the **Start** button, then on the left side of the Start menu, choose the **Accounts** icon, and then select **Sign out**.



FAQ

- How do I get help with issues related to remote desktop access to the ITP Security Lab?

Please submit a Viterbi Service Desk ticket at myViterbi , email [engrhelphelp@usc.edu](mailto:engrhelphelp@usc.edu), or call 213-740-0517 M-F 8:30am-10:00pm.

- When should I connect to my assigned lab computer for my class?

Your assigned lab computer will be ready for you to remote connect 5 minutes before start of your scheduled class time.

Note that if you log on more than 5 minutes prior to the scheduled class time, you will get a notice to log off before the system logs you off. You will need to log back on if you are not part of the class that is about to start.

- When my class is not session, will I be able to access my assigned computer?

If there are no classes in session, computers will be available on a first come first served basis. Note that there are other ITP classes making use of the ITP Security Lab computers.

## Viterbi ITP Security Lab

\*\* 2020-Fall Open Lab Hours are not available during the following \*\*

### Monday

- 6:00pm to 8:50pm

### Tuesday

- 11:00am to 1:50pm

- 6:00pm to 8:50pm

### Wednesday

- 9:00am to 11:50am

- 2:00pm to 4:50pm

- 6:00pm to 8:50pm

- How long may I stay connected to the lab computer?

You may stay connected to the lab computer for up to 4 hours per session. You will be prompted to save your work and log off 15 minutes before the 4-hour mark. After logging off, you may log back in if the lab computer is available.

- What happens to my remote connection session if it is idle?

If the system does not detect any user response via keyboard or mouse within **60 minutes**, the system will reboot itself. Please make sure to save your work frequently to prevent data loss.

- What happens to my remote connection session if I closed Remote Desktop Connection window (or lose Internet connectivity) without logging off the lab computer?

Your Remote Desktop Connection session remains active for up to 60 minutes. During this time, you may attempt to reconnect to the lab computer and pick up where you left off. If you do not reconnect to the lab computer, the system's inactivity timeout policy will be triggered.

You are urged to properly logoff the lab computer to prevent potential data loss and for the lab computer to be ready for use by the next user. Please be considerate of other users sharing the assigned lab computer.

- How do I get help with issues related to class Virtual Machines or class materials?

Please contact your Instructor or class TA.

- I am having trouble running my VMs from the C: Drive.

Given the limited space in the C: Drive, all students should run and store their VMs (and snapshots) on the D: Drive. There is more capacity on the D: Drive to handle the VM dynamic sizing accordingly.

- Can I RDP onto the ITP Security Lab from my Linux device?

Please follow the directions accordingly.

1. From within Linux, open a web browser and go to [vpn.usc.edu](https://vpn.usc.edu)
2. Select the AnyConnect option on the left. It will give you an option for Download for Linux. Click on this option.
3. Save the file to your downloads directory (do NOT open it using a text editor).
4. Open a terminal, go to your downloads directory  
`cd ~/Downloads`
5. Run the command  
`sudo sh ./anyconnect-linux64-4.8.02045-core-vpn-webdeploy-k9.sh`
6. This will install the Cisco AnyConnect Client into your Linux system.
7. Launch the Cisco AnyConnect Client from the GUI using the search function and typing in Cisco.
8. Type in [vpn.usc.edu](https://vpn.usc.edu) for the "Connect to:" option. Then hit Connect.
9. You will get a pop-up browser for your USC credentials. After verifying, you should be connected. You can confirm by using the



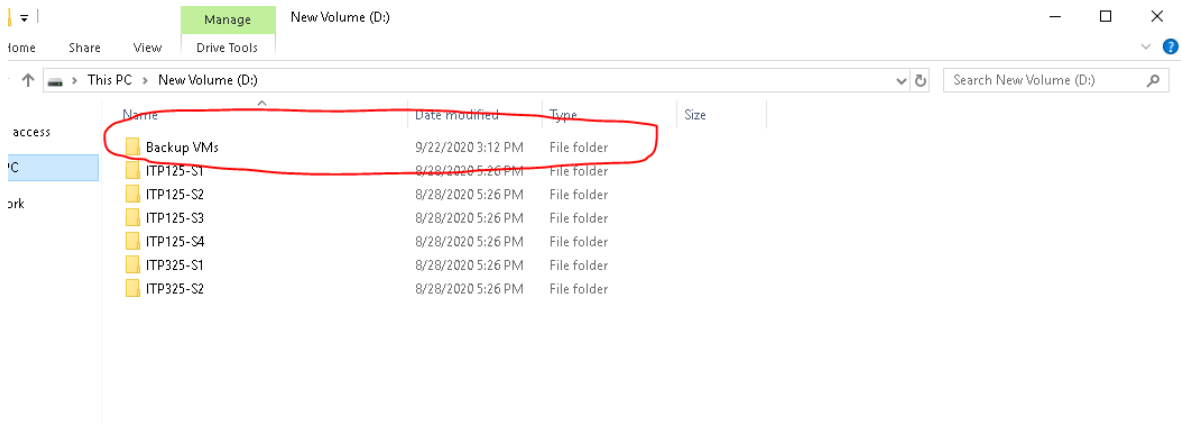
**ifconfig**

command to see a new network profile with a different IP address.

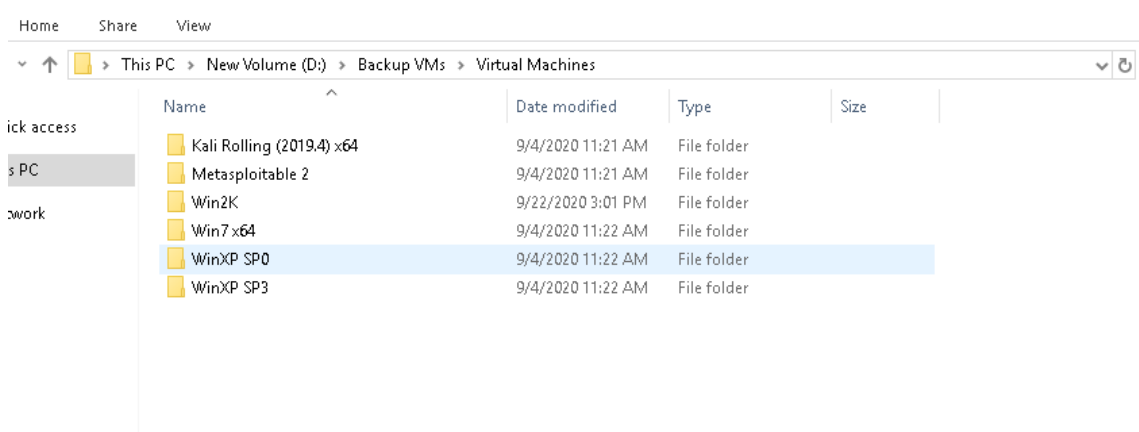
10. For remote desktop, go to Search, and type Remmina (default installed with Ubuntu and most Linux distributions). Remmina is a remote desktop program that allows you to connect from your Linux system to the RRB lab using RDP.
11. For the connection, enter the following line:  
[RRB101-XX.vlab.usc.edu](http://RRB101-XX.vlab.usc.edu)  
where XX is your computer number from the [myviterbi.usc.edu](http://myviterbi.usc.edu) Security Lab login.

- Oh no! I accidentally deleted my VMs off my computer!

1. On the file explorer, select the D: drive
2. Click on the **Backup VMs**

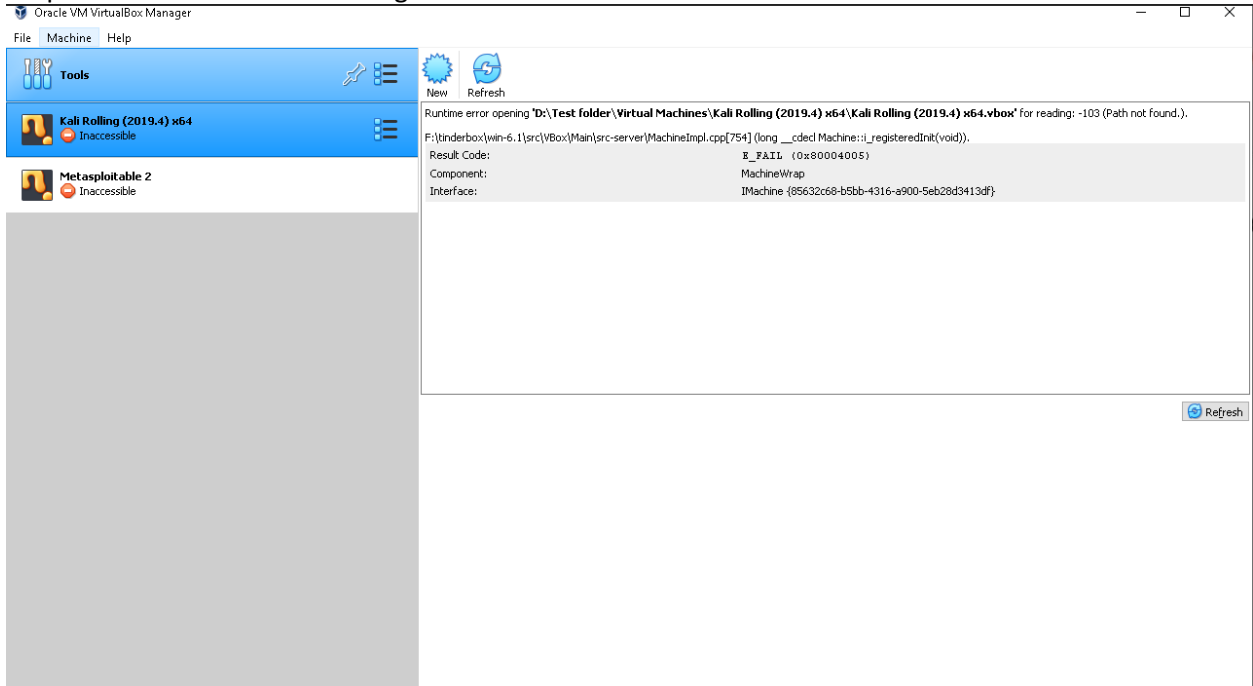


3. Grab a fresh copy of the VM you need.

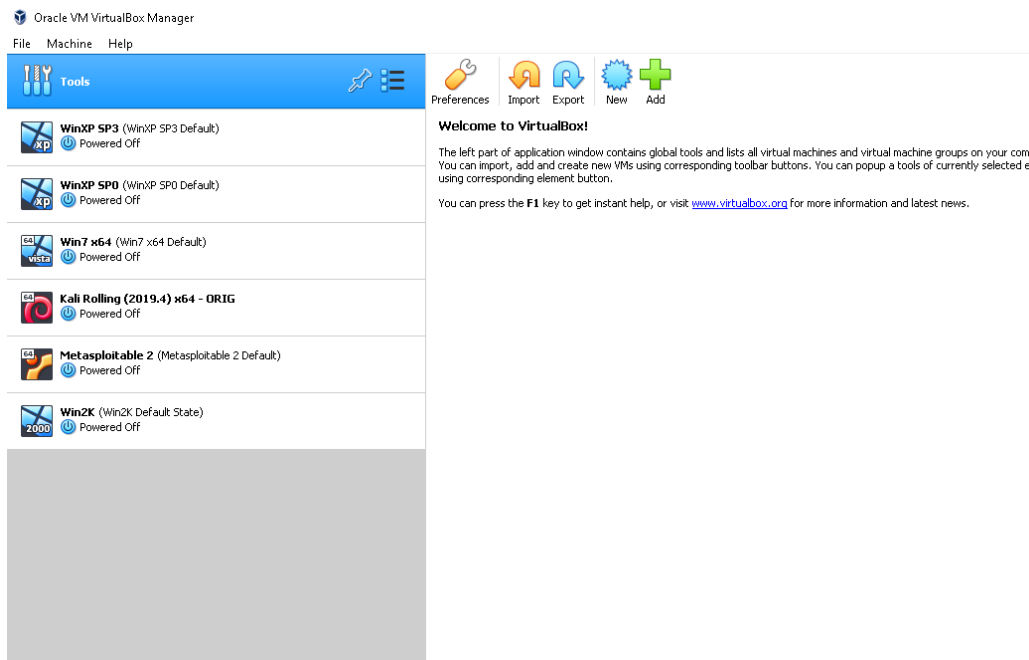


No modifications can be made to this backup folder. Do not connect to the VMs in the backup folder directly. You must copy to your D: drive.

- Help! I encountered the following:



The solution is to remove the VMs from the Virtual Box manager (do not delete the files) and simply re-add them back from the D: Drive.



This will allow Virtual Box to point to the correct Vbox files on the D: drive.