

Campus Press For Viterbi Faculty and Staff

General Information

Campus Press (CP for short) is a large scale service that provides managed WordPress sites to educational institutions. USC ITS has put an agreement into place with CP to provide websites to the whole USC community. For USC Viterbi Faculty and Staff, the CP service is accessed through USC Viterbi Communications, so we can ensure that our constituents receive the best/fullest level of service and support.

CP is offered free of charge to the USC community and is a modern, easy-to-use content management system (CMS) that individuals with no web programming knowledge (and even just basic computer knowledge) can administrate. It formats your site to the individual device it is viewed on (responsive design) and is intended to display content such as images, text and embedded videos. It does have some basic tools to help layout content-rich pages, such as image sliders or content accordions and also offers the use of drop-down menus for content-heavy sections of the site. The system is intended to create research lab, group, project and faculty sites.

While it offers many benefits as outlined above, it also comes with its own set of restrictions (passed down to us from ITS/the Campus Press Vendor), so a certain amount of flexibility is paramount when building a site in CP:

- A user is limited to one of the 4 templates provided. No third party WP templates found on the web may be installed.
- All of the existing templates are primarily designed to be used in a single column layout. The exception is the Unlimited theme, which can be used in a 2/3 – 1/3 column split for select pages through the use of widgets.
- [Branding guidelines](#) from USC central must be adhered to.
- Only the already installed plugins may be used for additional function/features beyond the standard WP functions. It is not possible to install third party plugins.
- Per ITS rules, the site must have public information and pages can not be password-protected. Also, collection of payments is not allowed.
- While USC Viterbi Communications staff is happy to help request a site, provide basic training and help with review and launch, the ongoing maintenance (content creation/editing) is the responsibility of site owner (or her/his designees).

Process

- Please consider the restrictions mentioned above carefully and review the template examples at the end of this document carefully.
- Once you have determined that your site needs fit within the restrictions and have chosen a page template, get in touch with your support person (the person you got this document from) and they will request the site for you from ITS. Please provide them with needed information such as the envisioned site name, existing urls/websites, targeted audiences and purpose of the site.
- When your support person hears back from ITS with new site approval, they will contact you to set up a date and time for a training session. All individuals that work/maintain the site on a regular interval should attend this session. If you have existing content that should go onto your site, you should bring such to the session as well, as usually our training sessions are “hands on”, meaning we actually build out part of your site with you as a training exercise.
- After your training is complete, you or your designee will be in charge of completing the content build of the site. You may contact your support person for troubleshooting issues.
- Once you have the site built out, notify your support person. They will review your site and then launch it for you!

- After the launch, you as the site owner (or your designee) are in charge of updating your site (keeping is current) and making the necessary edits for this directly in CP. Your support person can be relied on for questions / troubleshooting issues, but their workload does not permit them to serve as the primary editor for your site. Please understand.

Templates

The next 4 pages of this pdf each hold an example of available templates for CP. The order of the templates, by name is: **Unlimited, Kiyomizu, Resonar and Twenty Seventeen**

Please note:

- The black admin bar all the way on the top of site (the one that shows commands such as Customize, New, Edit Page, etc is only visible for a site admin when logged in, the regular site viewers will not see this).
- For the examples shown below, we had to downsize the screenshots of the sites to fit them into this pdf, meaning header, menu and body text is much larger on an actual website site vs these screenshots.
- A user can control the color of the bar that underlays the USC logo, so it is possible to give it some more pop through the use of Cardinal (Red) or more of a clean look through the use of White or Black.

Unlimited Theme

Sanders' Sustainable Systems Group

Sonny Astani Department of Civil and Environmental Engineering - Viterbi School of Engineering



Welcome to Dr. Kelly Sanders' Sustainable Systems Research Group within the University of Southern California's Sonny Astani Department of Civil and Environmental Engineering. Our group analyzes large-scale resource management systems to address the technical, political and societal issues that challenge the sustainability of our local, regional, and global communities.

Research Thrusts:

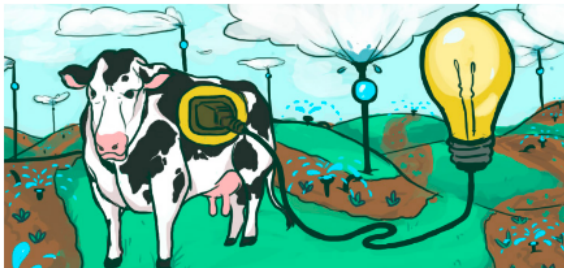
1. The Energy-Water Nexus



2. The Environmental Impacts of Electricity Production



3. The Food-Water-Energy Nexus



Recent News & Media:

6/29/2017: S³ group member, **Rebecca Peer**, honored as an Annabelle B. Bush Memorial Endowed Scholar.
5/22/2017: Sanders selected to participate in the 2017 US Frontiers of Engineering conference hosted by the National Academy of Engineering.
5/1/2017: Sanders is honored as the recipient of the Dr. Teh Fu Yen Early Career Chair of Civil and Environmental Engineering.

Latest Publications:

G. Alhaneaee, K. Sanders, N. Meshkati. (2017). "Rising Temperatures, Rising Risks: The Food-Energy-Water Nexus in the Persian Gulf." *Environmental Science & Technology*, in press.
C. Zhang, L. Zhong, S. Liang, K.T. Sanders, J. Wang, M. Xu. (2017). "Virtual water and virtual scarce water transfer embodied in inter-provincial electricity transmission in China." *Applied Energy*, 187 (1), Pages 438-448.

Where are we in 2017?

12/11-15: AGU Fall Meeting, New Orleans, LA
6/25-29: ISIE-HSSST 2017 joint Conference, Chicago, IL
6/20-22: AEESP Research and Education Conference, Ann Arbor, MI

Upcoming Talks:

@KellyTSanders

Tweets by @kellytsanders

Kelly T. Sanders @kellytsanders
I'm taking a much needed vacation from social media for a while. Happy holidays, Twitter! See you in 2018!
Dec 9, 2017

John Upton @johnupton
Late Friday, EPA announced it will no longer be requiring minerals mining companies to prove they'll be able to afford to clean up their messes after they're done. thehill.com/policy/energy-...

EPA scuttles rule on mining cleanu...
The Trump administration said Friday it will not issue a regulation to ensure that thehill.com

Corin@ Logan @LoganCorina
New implem...
Embed View on Twitter

Medical Device Development Facility

Department of Biomedical Engineering

Home

Projects ▾

Publications

Contact



Gerald E. Loeb, M.D.

Professor of Biomedical Engineering
Director of the Medical Device Development Facility
Office: DRB B11
Phone: (213) 821-5311
Fax: (213) 821-3897

Email: gloeb@usc.edu
[Dr. Loeb's CV](#)
[Dr. Loeb's Publications](#)

Background ▾

Research ▾

Structures and Materials Research Laboratory

Sonny Astani Department of Civil and Environmental Engineering – Viterbi School of Engineering

Home About Facilities and Equipment Projects Resources People Contact

People

Faculty

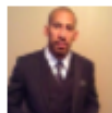


Dr. Bora Gencturk

Assistant Professor

*Director, Structures and Materials Research Laboratory
Department of Civil and Environmental Engineering
gencturk@usc.edu*

Staff



Michael Johnson

Laboratory Coordinator

*Structures and Materials Research Laboratory
Department of Civil and Environmental Engineering
john257@usc.edu*

- Troubleshoots and repairs instrument/equipment, sets up and maintains labs, coordinate safety, trains students, staff and faculty to operate machinery and equipment, assists with research projects.

Post Doctoral Research Associates



Jianqiang Wei

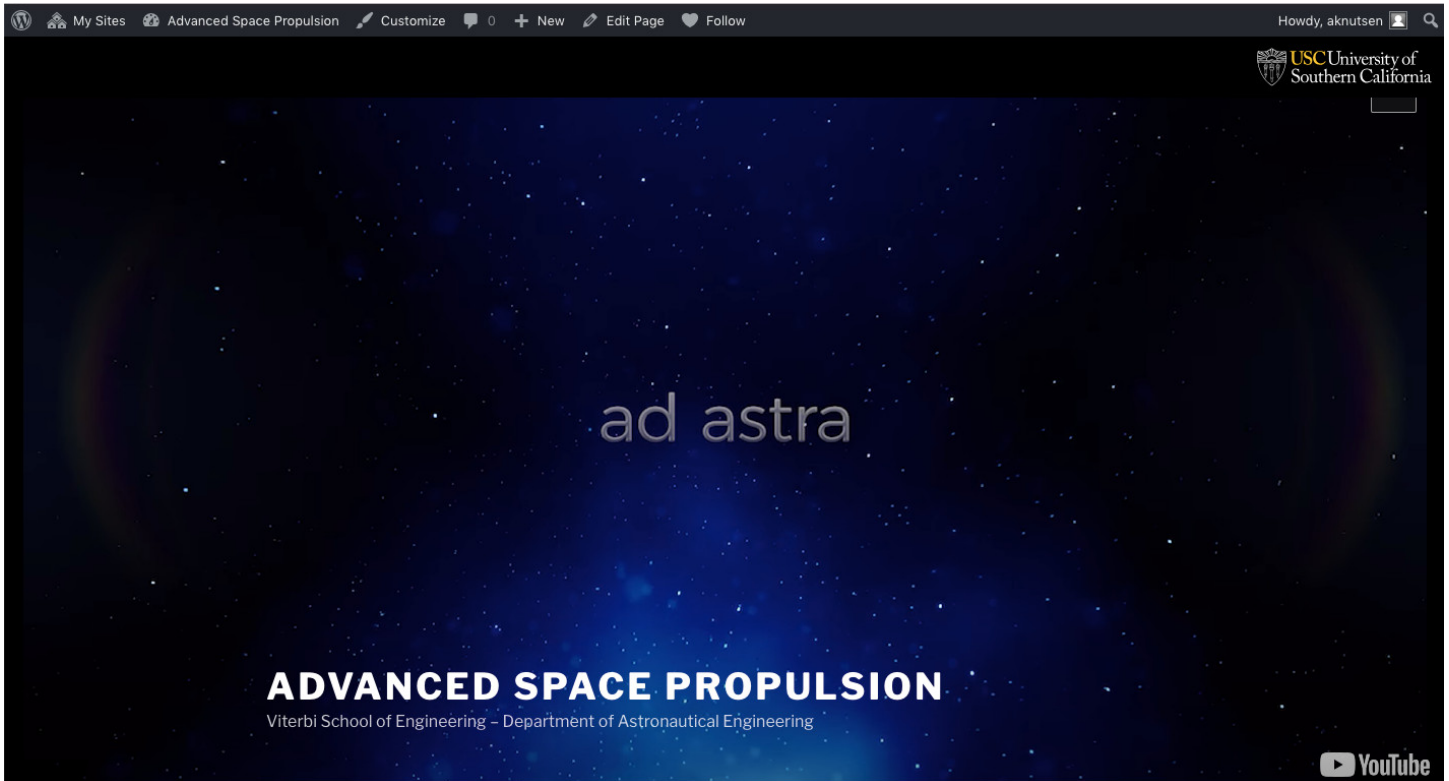
*Department of Civil and Environmental Engineering
jianqiaw@usc.edu*

Advisor: Dr. Bora Gencturk

Research topic: Alkali-silica reactivity (ASR) in concrete: analysis and mitigation techniques.

Twenty Seventeen Theme

Note: The large header image can be either a static image or a YouTube video that plays on page load



[Home](#) [About](#) [News](#) [People](#) [Projects](#) [Contact](#)

HOME

[Edit](#)

Charting Next-Generation Space Research

The [Space Engineering Research Center \(SERC\)](#) is dedicated to disruptive space engineering, research and education of the second-generation workforce – including hands-on build, test and flight demonstrations of spacecraft and satellites. SERC seeks to challenge traditional methods of space R&D, manufacturing and exploration with approaches that dramatically reduce costs, enable novel capabilities and support vital democratization of the space domain.

OVERVIEW

SERC combines disruptive space R&D, hands-on education of the second-generation workforce, and industry collaboration that delivers concrete benefits to our students and corporate partners. The only “engineering teaching hospital” of its kind within the context of a diverse research university, SERC teaches students to build, test and fly actual spacecraft and satellites. We also prepare them for a radically different, democratized environment in which a burgeoning number of nations and private enterprises will compete to reduce costs, enable novel capabilities and re-envision what space means to Earth.

Proudly powered by [WordPress](#)

